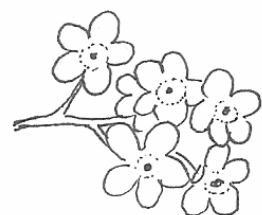
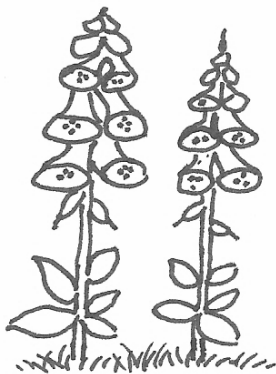
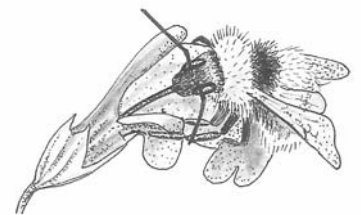
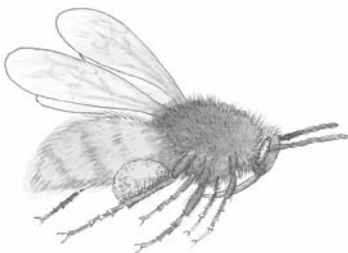
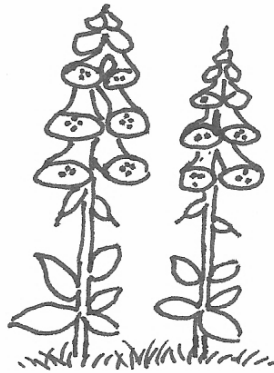
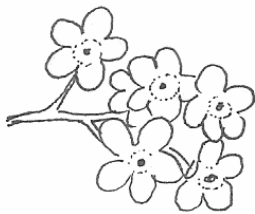
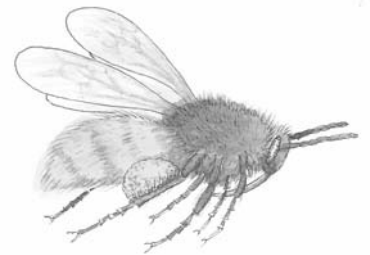
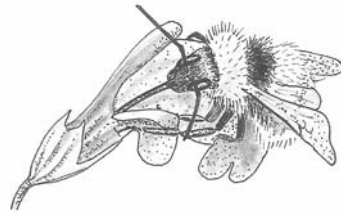
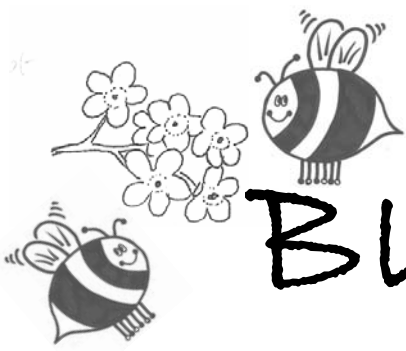


Bumblebee Memory Game

Glue this page on to a sheet of card. (If you don't want to cut up your copy of Busy Bees, you could make a photocopy of this page and use that instead). Cut along the dotted lines to make twelve separate cards. Mix up the cards and place them with the pictures facing down. Taking turns with a friend, turn over two cards to try to find a matching pair. Whoever finds the most pairs wins!





BUSY BEES

Issue 3, October 2007

Welcome!

to the third edition of *Busy Bees*, the Bumblebee Conservation Trust's newsletter written just for kids! In this issue:

- Learn about what bumblebees do during the winter
- Lots of fun facts and games

If you have any questions or suggestions, then please email or post them to us at the address at the bottom of this page. We'd love to receive any of your poems, drawings or songs. We will display all of these on our website and will even include some of our favourites in future editions of *Busy Bees*!

Bumblebee Hibernation

At this time of year, queen bumblebees start to get very sleepy. It's time for them to find a warm and cosy place to sleep during the cold winter months. This is called *hibernation*.

Before a queen bumblebee can *hibernate*, she needs to eat lots of nectar (a sugary liquid, like juice) and pollen (like yellow dust) from flowers. This helps her to get nice and fat. She won't wake up during the winter to eat, so she will need the fat stored in her body to give her the energy to stay alive. You can help by planting lots of the bumblebee friendly plants that flower late in the year in your garden (see our website for more details).

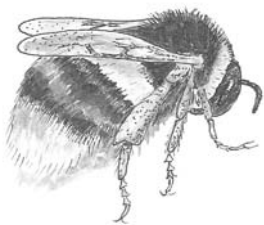
After feeding, the queen looks for a good place to hibernate. She may dig a small hole in the soil or she might bury herself under a pile of leaves or find a dark spot in an old plant pot. When she is happy with her winter home, she settles down into a long and very deep sleep. She stays like this until the warmth of the next spring, when she wakes up and starts a new nest of baby bumblebees.

So, if you come across a bumblebee that isn't moving this winter, please just leave her to sleep. She is not hurt, she's just hibernating!

Bumblebee

Maze

This sleepy queen bumblebee is looking for a nice hole to hibernate in over the winter. Can you guide her through the maze to the perfect spot?



Did you know?!

Queen bumblebees can sleep for up to 8 months during hibernation without waking up once!



BUMBLEBEE WORD SEARCH

Can you find these words in the puzzle below?

QUEEN

HIBERNATION

SLEEPY

SPRING

FLOWERS

COLD

ENERGY

NECTAR

POLLEN

WINTER

WARM

HOLE

LEAVES

BUMBLEBEE

v r s p s e v a e l g g s o
x e n e r l d p t w o b b q
p h i b e r n a t i o n k d
p k g n i r p s l s w e v s
e l o h m s x w r i s c m c
t m q p o l l e n r l t t j
g s w z b k n t e u h a y s
q u e e n i e w h n p r r l
d q m c c r o h i d e u h e
w a r m d l w c o l d r t e
n s t t f i w a a v s l g p
c e e b e l b m u b e r g y

