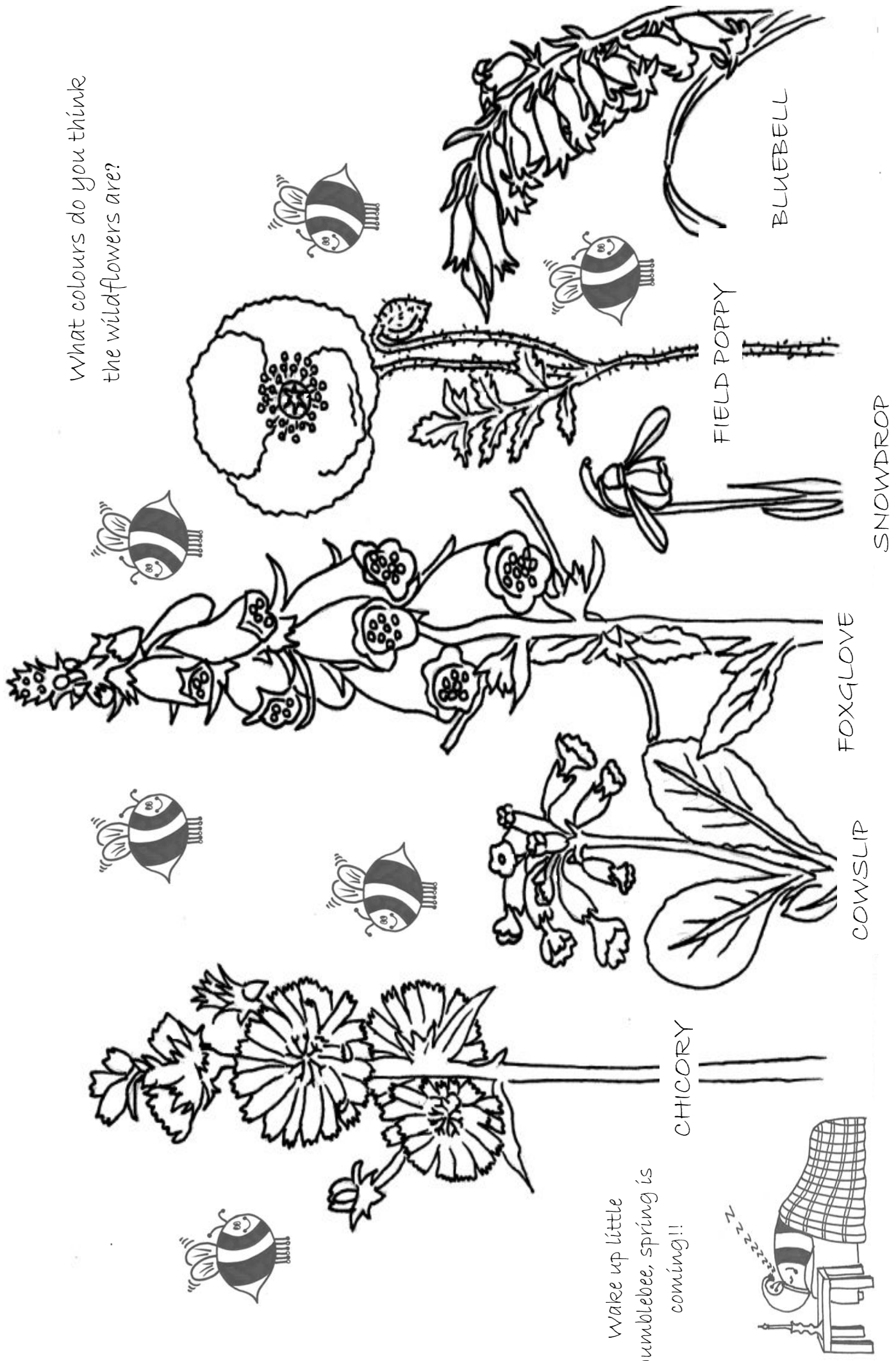


With a bit of luck your own wildflower patch will be filled with lots of bumblebees this summer.....

What colours do you think the wildflowers are?



Wake up little bumblebee, spring is coming!!

CHICORY

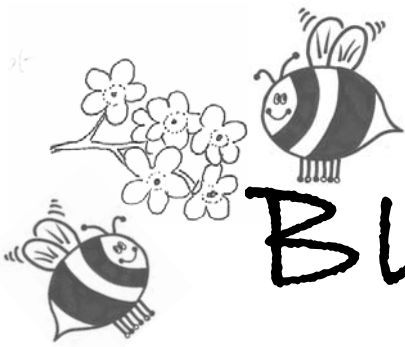
FOXGLOVE

FIELD POPPY

COWSLIP

SNOWDROP

BLUEBELL



BUSY BEES

Issue 4, March 2008

Welcome!

to the fourth edition of Busy Bees, the Bumblebee Conservation Trust's newsletter written just for kids! In this issue:

- What bumblebees do in spring.
- Create your own wildflower patch.
- Fun games and colouring in.

If you have any questions or suggestions, then please email or post them to us at the address at the bottom of this page. We'd love to receive any of your poems, drawings or songs. We will display all of these on our website and will even include some of our favourites in future editions of Busy Bees!

What bumblebees do in spring...

It's almost spring and the queen bumblebees, who have been asleep all winter, will soon be waking up. The queens are very large, and from February onwards they can be seen feeding on flowers such as willow catkins and bluebells, or flying low over the ground looking for a good place to start a nest.

When they wake up, the queens are very hungry because they haven't eaten all winter. So first they must find some flowers and eat lots of nectar and pollen to fatten up. Then they have to choose a place to build a nest. Some bumblebees prefer to nest underground in old mouse holes, while others nest just above the ground in thick grass or hedgerows. When the queen has found a cosy place, she stores lots of pollen and nectar in her nest and then lays her first eggs. She then sits on the eggs to keep them warm.

When the baby bumblebees hatch out of the eggs they have no legs and are called grubs. They eat the pollen and nectar stored in the nest to help them grow. The grubs grow up to become worker bumblebees. They are all girls and will help their mother, the queen bumblebee, to gather food and make the nest bigger.

WORD SEARCH

Can you find these plant names in the puzzle below? They are all bumblebee favourites and provide food for bumblebees in spring

Apple

Bluebell

Broom

Cherry

Heather

Currant

Plum

Pussy Willow

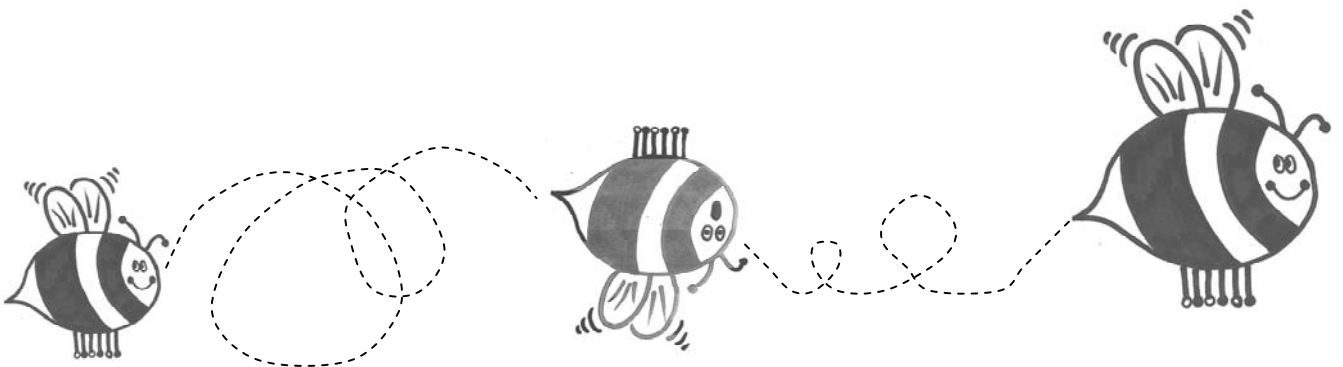
Dead Nettle

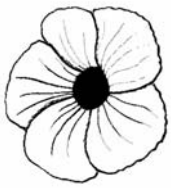
Rosemary

White Clover

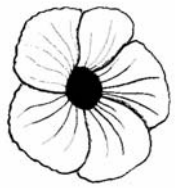
Pear

F P H J K L O H W Y M U L P
K A I E H K O M O O R B L U
S V P D S G J K I L P I T S
F O D P C U R R A N T H G S
A D G J L O U T E Q X V N Y
B C Z C H E R R Y R Y I P W
R E H T A E H U H V Y G C I
F D E A D N E T T L E S D L
R E V O L C E T I H W R P L
U Y B L U E B E L L R A D O
S A P O Y I T F B J G E M W
C Y Y R A M E S O R S P P O





THE LITTLE BUMBLEBEE GARDENER : CREATING YOUR FIRST WILDFLOWER PATCH



Wouldn't it be nice if you could have your own wildflower patch where you could feed and watch bumblebees all summer long? It is not very difficult! Why don't you ask your parents if you can have a small area in the garden for your own little project?!

- ✿ First choose a small patch of ground or a flower bed.
- ✿ Next, you will need some wildflower seeds to scatter in the soil. If it is still cold outside, put the seeds in a pot of compost on your windowsill until it is warmer outside. Please write to us or visit our website to find out which plants bumblebees love most.
- ✿ When the first little plants appear make sure that you give them plenty to drink. This will make them grow into big, healthy plants that bumblebees will love to visit.

Don't worry if you do not have a garden - you can also grow your flowers in pots outside your window or on your balcony. Bumblebees will be happy to come and visit them there too!

GOOD LUCK and please send us pictures, drawings or stories about how your project is coming along. And let us know how many bumblebees you spot on your flowers!!!

SPOT THE DIFFERENCE

There are 10 differences between the two pictures below. Can you find them all?!

