



The children's gallery on our webpage is still looking a bit empty! Why not use this space to draw your favourite bumblebee and send it to the address at the bottom of this page?!



BUSY BEES

Issue 5, July 2008

Welcome!

to the fifth edition of Busy Bees, the BBCT's newsletter written just for children! In this issue:

- Summer bumblebees
- What type of bumblebees do you have in your garden?
- Fun and games

If you have any questions or suggestions, please email or post them to us at the address on the back page. We'd love to receive any of your poems, drawings or songs. We will display all of these on our website and will even include some of our favourites in future editions of Busy Bees!

Summer bumblebees

Summer is a time for enjoying the sunshine and playing outside. But you are not the only one enjoying your garden! Look closely and you may see that some furry friends have come to join you....

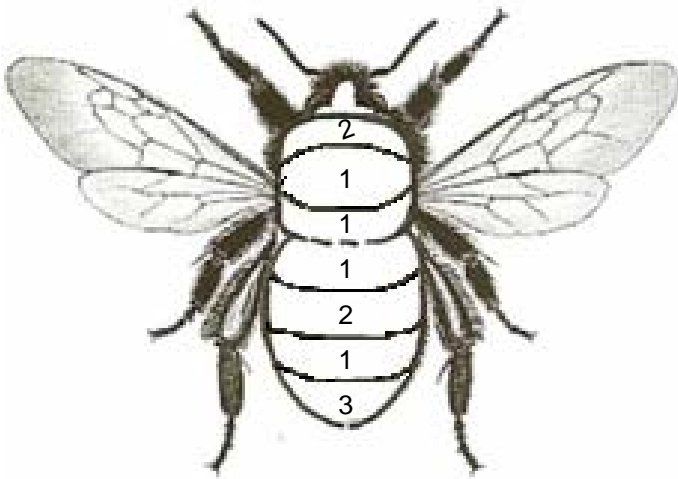
Bumblebees are very busy at this time of year. Their nests have grown since spring and each one may have up to 400 bumblebees living in it! That's a lot of hungry bees to feed! The queen bumblebees are safely tucked up in their nests now, looking after their babies. So, most of the bumblebees that you will see at the moment are called workers. They are all girls and they help their queen by collecting nectar and pollen from flowers to take back to the nest to feed to the baby bumblebees.

Some of these baby bumblebees will grow up to be queen bumblebees like their mother. In the autumn the old queen and the worker bumblebees will die. However, these new queens will find a safe place to hibernate through the winter. Then, when they wake up next spring, they will make nests of their own.

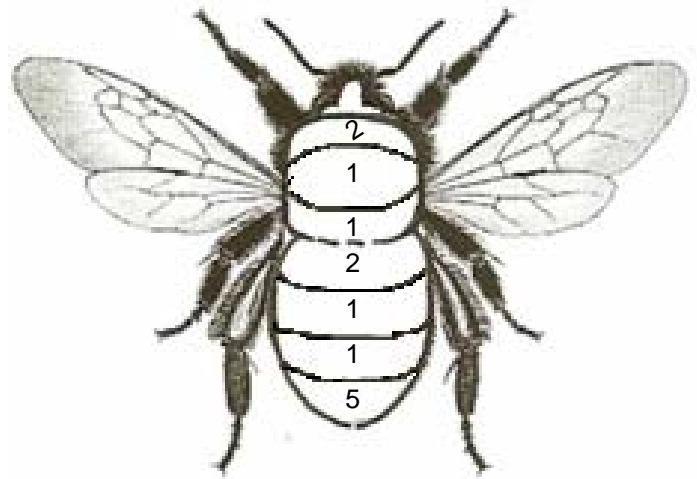
Which bumblebees do you have in your garden?

There are many different kinds of bumblebee and they are all different colours. Colour in these bumblebees using the colour code below. Then, take your drawings out into the garden and see how many of each type of bumblebee you can find. Put a tick in the box under each bumblebee when you see each one. You will be surprised how many there are!

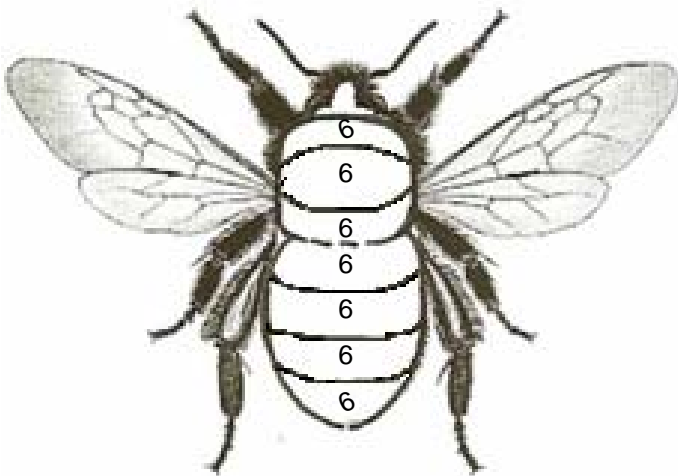
- | | |
|------------|------------|
| 1 = black | 4 = red |
| 2 = yellow | 5 = orange |
| 3 = white | 6 = brown |



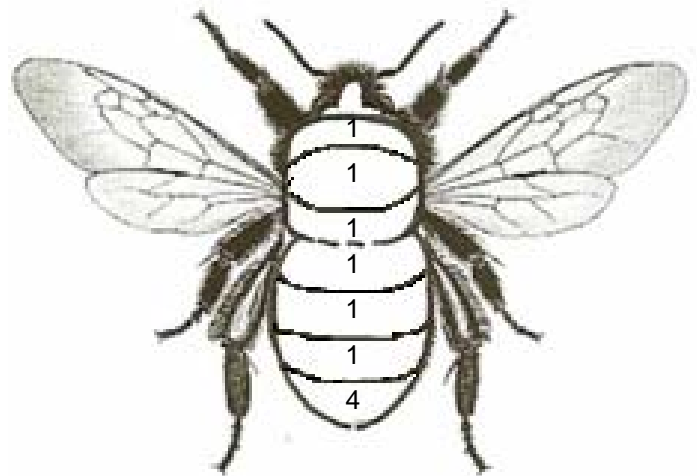
White tailed bumblebee



Early bumblebee



Common carder bee

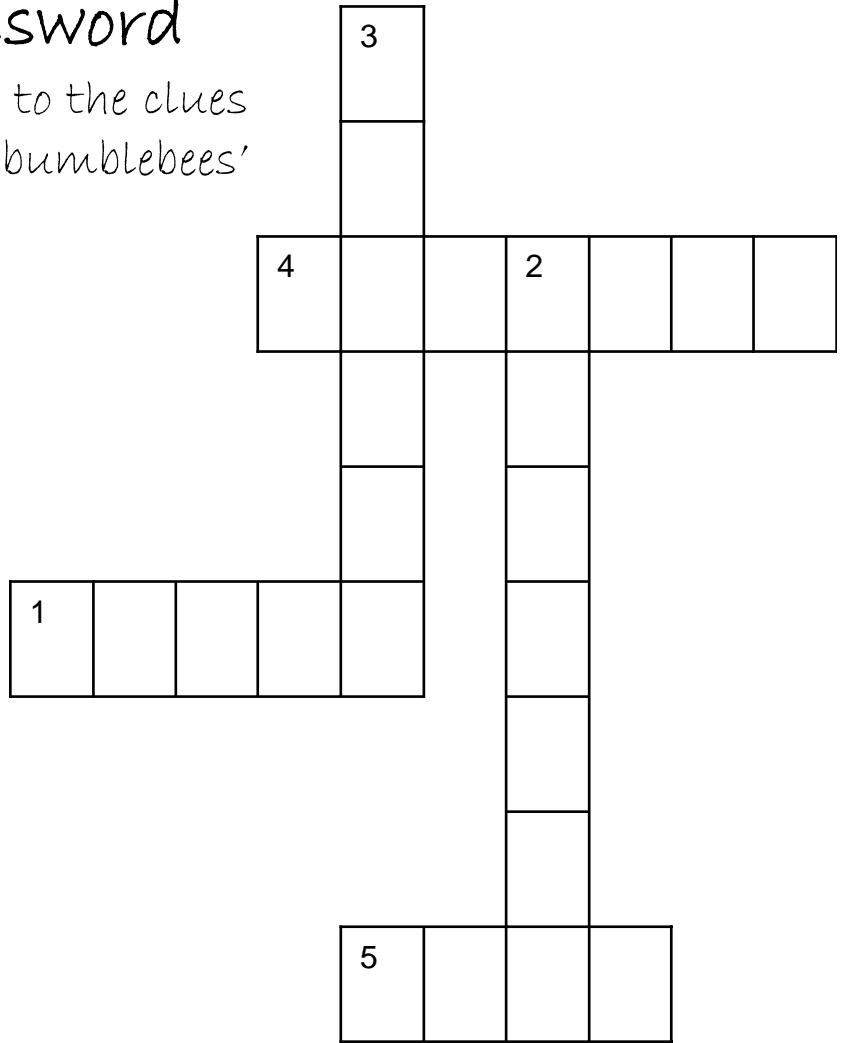


Red tailed bumblebee

Bumblebee Crossword

You can find the answers to the clues in the article 'Summer bumblebees' on the front page:

At this time of year bumblebees are very busy. The _____ (1) bumblebees are safely tucked up in their nests but the _____ (2) are out all day collecting lots of nectar and _____ (3) from _____ (4) in the garden to take back to the _____ (5) to feed to the baby bumblebees.



Bumblebee

Maze

This busy worker bumblebee is returning to the nest with some pollen and nectar. Can you help her find the hungry baby bumblebees?

