

# The Big8 UK bumblebees

## Buff-tailed bumblebee



Worker/male

Queen

Queens are very large.

The queen's tail is blonde, but worker and male tails are white, with a thin blonde edge.



## Early bumblebee



Male

Worker

Queen

The queens and males have two clear yellow bands, but workers often only have one. The tail is red.



## White-tailed bumblebee



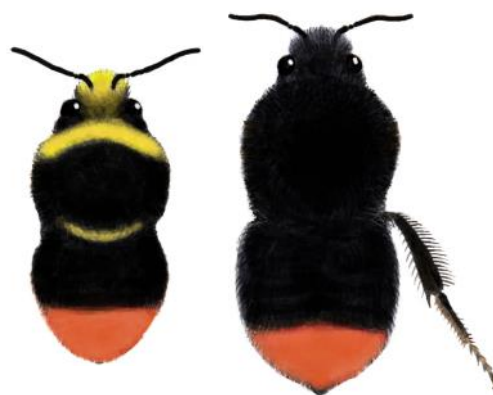
Male

Queen/worker

Queens and workers have a clean white tail and two lemon-yellow bands. The males have more yellow hair, and have yellow tufts of hair on the head and face.



## Red-tailed bumblebee



Male

Queen/worker

The queens and workers are completely black, except for a dark red tail. The males look similar, but have some yellow hair.



### Common carder bee



This bee is mostly brown or ginger and sometimes has thin black bands.

Queens, workers and males all look very similar.

Queen/worker/male

### Tree bumblebee



The Tree bumblebee is a new arrival to the UK. It can be found in most of England and Wales, and was first spotted in Scotland in 2013.

It is the only one of our bees to have a ginger and black body, with a white tail. It usually nests above ground, often in bird boxes and trees.

Queen/worker/male

### Garden bumblebee



This bee has three yellow bands on its body, with a clean white tail.

The queen, workers and males all look similar.

It has a longer face than other bumblebees.

Queen/worker/male

### Heath bumblebee



The Heath bumblebee is similar to the Garden bumblebee, which also has three yellow stripes and a white tail. However, the face of the Heath bumblebee is more round than that of the Garden bumblebee .

Queen/worker/male